

Waikato River Clean-up Trust Funding Strategy

2015



Waikato River
Authority



Contents

Introduction from the Co-Chairs	4
The Waikato River & its catchment	6
Map of the Trust area	7
Section 1: Background	
1.1 The Authority and its role	8
1.2 The purpose of this document	8
1.3 The Waikato River Clean-up Fund	8
1.4 Background documents to support applications	9
1.5 Ten year goal	9
Section 2: Criteria for applicants and applications	
2.1 Criteria for applicants and applications	10
2.2 Threshold Criteria	10
2.3 Objectives outlined in legislation	10
2.4 General requirements for all applicants	11
2.5 Other matters for consideration	11
Section 3: Priorities for funding	
3.1 Background	13
3.2 Priorities	13
Section 4: Information requirements	
4.1 Information requirements and priorities to guide applicants	17

From the Co-chairs

This is the 5th Funding Strategy to be published by the Trust since the inception of the Trust and its sole Trustee the Authority.

Each year the Trust reviews its Funding Strategy prior to the funding rounds. The funding Strategy demonstrates the Trust's and Authority's determination to restore and protect the health and well-being of the Waikato River.

In this 5th funding round the Authority provides greater direction and guidance for applicants seeking funding to help clean-up the river.

Among the areas the Authority is maintaining or giving increased priority to are:

- Improving connectivity between different parts of the ecosystem (both the Waipa and Waikato rivers, feeder streams and lowland lakes). Physical / chemical conditions are reliant on connectivity, and many native species require access to areas they cannot currently reach
- Water Quality: A greater emphasis on the protection and restoration of wetlands and a continuing focus on those projects that deliver a direct and tangible improvement in river water quality
- Collaboration: Support for projects that see a broad range of groups working together to address specific issues impacting the river or issues focused at a specific part of the catchment (e.g. a specific lake)
- Lower Waikato and Waipa Rivers: Projects that impact positively and directly on the Waipa River and lower Waikato River, which are the areas that are most degraded. Specifically a focus is given to those projects that support the implementation of the 20 year Waipa Catchment Plan
- Restoration Plan: The development of a medium term (5 - 15 year) restoration plan for the Waikato River Catchment.

This year will see up to \$6 million made available for clean-up projects. However we again stress the need for co-funding to be part of successful applications. The funds available to the Trust and the Authority will not be sufficient on their own to see the vision for a restored and protected Waikato River achieved.

To date there have been 141 projects funded by the Trust through the Authority with committed funds approaching \$22 million. We look forward to receiving and approving more high quality projects this year that will help us achieve the vision for the Waikato River.

Teena koutou, teena koutou, teena koutou katoa.



Tukoroirangi Morgan
Co-chair



Hon John Luxton
Co-chair

Riparian planting signage at Whatawhata



Hamish Dean (Kessels Ecology), Jenni Vernon (Waikato River Authority) and Tawera Nikau (Nikau Trust) inspect an area cleared and recently replanted on the shore of Lake Waikare.

Residents and visitors to Otorohanga enjoying the river access picnic area on the banks of the Waipa River.



A Country Calendar crew spent the day filming clearing and planting on the Mangati Stream with Stu Muir.



Terina Rakena (Waikato Raupatu River Trust) at the launch of the Willow and Alders Guide.



Minister of the Environment Hon Dr Nick Smith takes questions from the news media after launching the start of work on the Waikato and Waipa River Restoration Strategy.

The Waikato River and its catchment

The Waikato River and its region has been populated for at least the past 700 to 800 years. The river provided physical and spiritual sustenance for large populations of Maaori living along its catchment. Throughout that time it was a source of food, including eels, fish and plants. It was also an important waka route.

With the arrival of European settlers in the 1840s and 1850s the Waikato River was the main access route inland for traders and missionaries.

The last hundred years have seen sweeping changes to the region's landscapes and where people have settled, used and created resources. Over time, the human activities along the Waikato River and the increasingly intensive land uses through its catchments have degraded the Waikato River and reduced the relationships and aspirations of communities who identify with the Waikato River.

This degradation of the Waikato River and its catchment has severely compromised Waikato River iwi in their ability to exercise kaitiakitanga or conduct their tikanga and kawa.

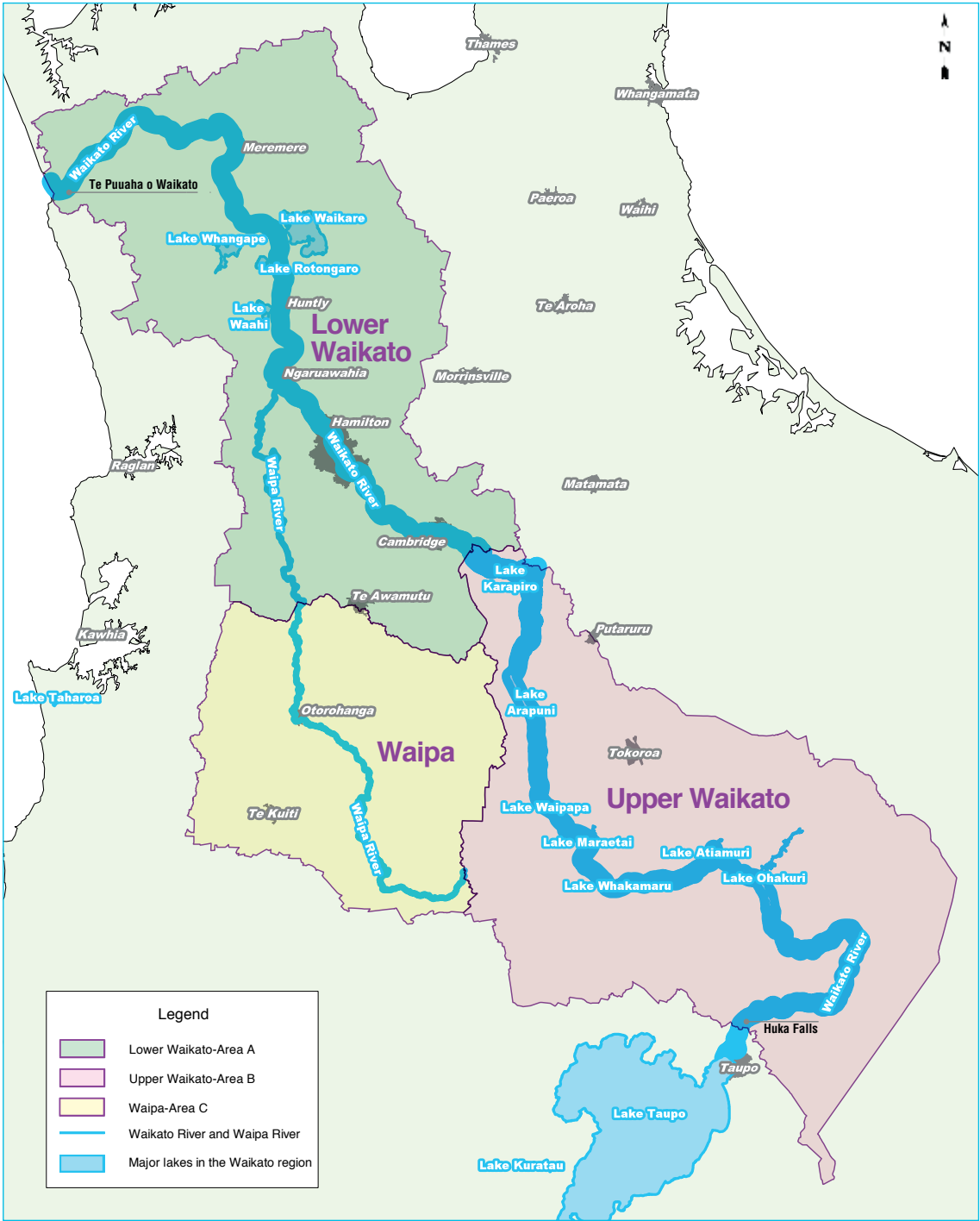
Through the Treaty Settlement process between Waikato-Tainui and the Crown the Guardians Establishment Committee was formed with the support of other Waikato River iwi. In 2009 the Guardians Establishment Committee finalised its Vision and Strategy for the Waikato River. That Vision and Strategy, "to restore and protect the health and wellbeing of the Waikato River", has been incorporated in the settlement legislation for the Waikato River Raupatu Claim - the legislation under which the Authority is constituted. The Authority assumed guardianship of the Vision and Strategy at the time of its formation in 2010.

The Vision and Strategy incorporates the objectives sought by Waikato-Tainui and other objectives that reflect the interests of Waikato River iwi and of all New Zealanders. In 2012 the Nga Wai o Maniapoto legislation was enacted to include the upper catchment of the Waipa River through to its junction with the Waikato River. The Vision and Strategy now applies to the whole of the Waipa River catchment.

These objectives encompass all people of the Waikato River and their relationships with it – through their communities, industries, recreation, social and cultural pursuits.

A number of important actions are being taken to support the achievement of the Vision and Strategy, such as the Waikato Regional Council's Healthy Rivers plan change. This plan change, with a focus on water quality within the catchment, will provide a regulatory framework to help achieve the objectives of the Vision and Strategy. Alongside this the work of the Restoration Forum, and the development of a 5-15 year restoration strategy for the catchment should result in a more cohesive, prioritised and coordinated approach to restoration activities in the years to come.

Map of the Trust area



1: Background and context

1.1 The Authority and its role

The overarching purpose of the legislation that created the Waikato River Authority ('the Authority') and the Waikato River Clean-up Trust (the 'Trust') is to restore and protect the health and wellbeing of the Waikato River and its catchment for future generations.

The purpose of the Authority is to:

- set the primary direction through the Vision and Strategy to achieve the restoration and protection of the health and wellbeing of the Waikato River for future generations
- promote an integrated, holistic, and co-ordinated approach to the implementation of the Vision and Strategy and the management of the Waikato River
- fund rehabilitation initiatives for the Waikato River in its role as trustee for the Waikato River Clean-up Trust.

The Authority is the sole trustee of the Waikato River Clean-up Trust. The Trust administers and distributes a contestable fund to work towards the restoration and protection of the health and wellbeing of the Waikato River for present and future generations (this forms the Trust's objective). In doing so it must pay adequate regard to the Vision and Strategy and the Waikato River Independent Scoping Study (WRISS). As the sole trustee the Authority determines which projects receive funding in accordance with criteria set annually.

The area that this Strategy applies to is the Waikato River and its catchment from Huka Falls to Te Puuaha o Waikato and the upper catchment of the Waipa River through to its junction with the Waikato River (as shown in the map on page 7). The "River" is defined in the Settlement Legislation as including the main stem, the tributaries, and all associated lakes and wetlands within the catchment.

1.2 The purpose of this document

The Trust reviews funding priorities annually to ensure funding continues to be aligned with the objectives of the Trust and the Authority. To help achieve this the Authority has formed, with other members of the community, the Waikato River Restoration Forum to support a comprehensive and connected approach to clean-up projects.

This document forms the Funding Strategy for 2015 for the Trust. It presents the criteria that the Authority believes will best position the Trust to award funds in a fair and consistent manner to projects that will not only meet the requirements set out in its legislation but will also lead to the most effective response for the restoration and protection of the health and wellbeing of the Waikato River and its catchment.

Priorities are presented both in terms of the geographical areas the Authority believes should draw particular focus from applicants, and also the nature of the projects the Authority believes are a high priority in and across those geographical areas.

1.3 The Waikato River Clean-up Fund

The Trust is responsible for administering a Clean-up Fund of \$220 million over 30 years. This year the Trust has decided that up to \$6 million will be available in the funding round.

Annual funding decisions are based on:

- Applicants meeting the funding criteria
- Applications being for projects identified as priority areas by the Trust
- The quality of the applications received.

The Clean-up Fund is contestable. The Trust may or may not award all or any of the identified funds in a funding round as this will depend on the quality of applications received and the quantity of funding sought by applicants. The Trust may also award a lesser amount than that

applied for. Where the Trust does not award all available funds it will consider how funds may be applied to future funding rounds.

The timing for this round of funding is:

- Funding round opens for applications 15 June 2015
- Funding applications close 14 August 2015
- Decisions announced to successful applicants in November 2015
- Deeds of Funding completed by 18 December 2015 (the Trust reserves the right to withdraw funding from applicants not able to complete the Deed of Funding as required)
- Funds distributed following completion of Deeds of Funding.

The Trust is open to funding a range of projects at different scales and over varying time frames. This could include one-off short term projects as well as projects taking up to five years, all to be funded from the current funding round.

All applications for funding must be completed using the application portal available on the Authority's website www.waikatoriver.org.nz.

1.4 Background documents to support applications

Applicants may find the following documents useful background in preparing applications:

- The Waikato-Tainui Raupatu Claims (Waikato River) Settlement Act 2010 and the Waikato Tainui Environmental Plan
- The Ngati Tuwharetoa, Raukawa and Te Arawa River iwi Waikato River Act 2010
- The Nga Wai o Maniapoto (Waipa River) Act 2012 and He Mahere Taiao - The Maniapoto iwi Environmental Management Plan 2007
- The Vision and Strategy for the Waikato River
- The Waikato River Independent Scoping Study.

These documents are available online at www.waikatoriver.org.nz along with a list of previously funded projects. Applicants should also consider the priorities identified within the various River iwi (Tuwharetoa, Te Arawa, Raukawa, Waikato-Tainui, and Maniapoto) environmental management plans and associated environmental prioritisation documents (e.g. Maniapoto Priorities for the Restoration of the Waipa River Catchment), as well as other catchment focused restoration strategies when developing their application.

1.5 Ten year Goal

The Authority and Trust have a ten year goal to protect the Waikato River and its catchment from a further decline to its health and wellbeing.

The Clean-up Trust has set a ten year Goal – the 'Goal' – in relation to the ongoing decline in the health and wellbeing of the river. The Trust anticipates this goal will guide funding decisions. This will also help ensure funding rounds are integrated, so that annually funded projects cohesively and logically work towards achievement of the Goal. Progress against the Goal will be continually reviewed and the funding priorities may change over time to reflect the outcome of these reviews.

2: Criteria for applicants and applications

2.1 Criteria for applicants and applications

The four key guiding concepts for the Trust are: Protect – Restore – Health – Wellbeing. In relation to the Waikato River and its catchment these concepts define much of the criteria for what sort of projects should be funded. The Trust has developed a range of criteria that guide applicants in considering whether (and how) to prepare an application for funding. Some of these criteria are mandatory (i.e. all applicants must meet them), and others are intended to guide applicants in terms of the Trust's priorities.

2.2 Threshold criteria

The Trust expects that all applications should meet the following broad 'threshold tests' before being considered eligible for funding:

- Any organisation or group applying for funds of more than \$10,000 must be GST registered (this includes organisations who make multiple successful applications in a single funding round that total over \$10,000)
- Projects must be focused on one or more of the four key guiding concepts of protecting, restoring, health and wellbeing in relation to the Waikato River and its catchment
- Projects must be technically achievable, and applications must clearly demonstrate this
- Preference will be given to projects that are able to demonstrate to a high level, certainty of success
- All projects must have a positive cost / benefit – that is, the project benefits must be demonstrably greater than the cost of the project. Benefits will be considered fairly across the four wellbeings of cultural, social, environmental and economic (the Trust recognises that not all benefits are able to be readily quantified)
- Applicants must know the outcomes the projects will deliver and have a monitoring framework so it is clear what constitutes 'success'. Project applications must demonstrate how monitoring will occur (e.g. site visits and peer review both during the project and after it is completed)
- The project should provide an outcome that will be maintained into the future without the need for ongoing funding from the Trust.

2.3 Objectives outlined in legislation

In addition to the Threshold Criteria above, all applications for projects are required to meet the objectives of the Trust outlined in the legislation and summarised below. These include:

- a) The Trust should not fund a project or a part of a project that another agency should or would fund (or be likely to fund) in the normal course of its operations if the Trust did not exist, eg. fencing of waterways on dairy farms, or activities that a territorial authority should undertake as part of their role would not be funded
- b) The Trust seeks efficiency in the allocation and use of funding, including having particular regard to the desirability of applicants using matching or supplemental funding from other sources, ie. higher co-funding (either in-kind or cash) helps
- c) Preference will be given to projects that achieve practical results over projects that are purely for research purposes
- d) The Trust requires that adequate regard be given to the Vision and Strategy in applications, including clear demonstration of how proposed projects will give effect to the Vision and Strategy
- e) The Trust requires that adequate regard be given to the report of the Waikato River Independent Scoping Study
- f) The Trust requires that adequate regard be given to any other relevant research (either within or outside the Waikato Catchment)

- g) The Trust requires that adequate regard be given to the extent to which projects would further iwi environmental plans, in the case of applications from iwi or applications based on Maatauranga Maaori or on the mauri of the Waikato River.

2.4 General requirements for all applicants

In addition to each application meeting the criteria outlined above, all prospective applicants must meet the following general criteria:

- **GST**
All funding applications **must** refer to **GST inclusive** figures at all times. Because the Waikato River Clean-up Trust receives its funding from the Crown in GST inclusive amounts, all funding business will be conducted in this way.
- **Legal Entity**
Funding applicants must be a legal entity in New Zealand, and projects over \$10,000 (or multiple successful applications from a single entity amounting to more than \$10,000 in a single funding round) must be GST registered. Applicants must not be currently registered as bankrupt or insolvent.
- **Trust Indemnified**
If the Trust suffers any loss or damage as a result of any act or omission of a Recipient, its employees, agents or contractors, the Recipient shall fully indemnify the Trust.
- **Deed of Funding**
All successful applicants will be subject to the terms and conditions of the Trust – The Deed of Funding (available from www.waikatoriver.org.nz). The Deed of Funding, which represents the funding contract between the Authority and the Recipient, must include a detailed project plan. This plan, at a minimum, shall contain:
 - Deliverables (the identifiable outcome(s) that will be delivered by the project as a whole, and at each milestone)
 - Key tasks (the key activities that will be undertaken to deliver the project successfully)
 - Milestones (key points in time throughout the project at which activities will be completed and/or deliverables delivered, and at which reporting and invoicing (for over \$50 000 projects) may occur)
 - A project cash flow.
- **Co-funding**
The Authority anticipates that all successful applications will have an element of co-funding included as part of their project. The greater the level of co-funding, the greater the weight the Trust will give to the application. Co-funding can only include new funding, and not funding used or activity undertaken prior to this specific project being started. Quantified in-kind activity may constitute an element of co-funding as may funding from other sources.
- **Financial and Reporting Systems**
The Authority requires all applicants to maintain sufficient financial and reporting processes to provide confidence that any funds awarded are used in the most appropriate manner to achieve the objectives of the project.

2.5 Other matters for consideration

Related projects

The Trust considers it advantageous if newly funded projects are related to adjacent or nearby restoration and/or protection projects, and/or build on existing initiatives. Previously funded projects may be found at <http://www.waikatoriver.org.nz/funded-projects/>

Projects that support improved connectivity between catchment ecosystems will be given priority.

The Trust recognises set-up costs may be required as part of applications for funding and these costs may include research, tools, training, and extension programmes. They must not include any capital purchases.

The Trust encourages applicants to consult with the appropriate Waikato River iwi who hold mana whenua relevant to the project area.

The Trust will not fund works that are required arising from the statutory planning framework within the Waikato region.

The 'polluter pays' principle will apply to projects and the Trust will not generally fund a project to address discharges or contamination that are the responsibility of the entity that created them. In exceptional circumstances the Trust may consider funding projects with a high degree of public good on a co-funding basis with polluters.

It is important to note that the Trust provides funds to cover the costs incurred in completing an agreed project, up to the maximum value approved. Projects will be reimbursed for actual costs incurred only where they are completed on or under budget. Unspent funds will be used by the Authority for future restoration activities.

Fencing standards

All projects receiving funding which include a component of planting are required to have permanent stock proof fencing erected to protect the planting. The following fencing standards have been developed to provide guidance as to the minimum standard required. Applicants should show fencing to an equal standard if they proposed other fencing.

	Electric	Standard
Sheep (and cattle)	5 wire, permanent posts	7 wire, post and batten
Cattle only	3 wire, permanent posts	5 wire, permanent posts

Note: grant funds may not be used for fencing of waterways on dairy or dairy support properties.

Protection of areas

Where funding of greater than \$100 000 is provided by the Trust, it is likely that a condition of funding will be that a protection mechanism (e.g. covenant or encumbrance) be put in place to protect the work undertaken. This will be treated on a case by case basis however applicants should state whether they are willing to protect the work or not in their application.

3: Priorities for funding

3.1 Background

The Trust consulted widely and through its networks has drawn on a wide range of sources to develop its priority areas.

In setting the following priorities the Trust has also given adequate regard to the Waikato River Independent Scoping Study (WRISS).

The key purpose of the WRISS was to provide the Crown and Waikato River iwi with a sound and objective basis on which to make decisions about the priority actions required to restore and protect the health and wellbeing of the Waikato River for future generations.

3.2 Priorities

Priorities for funding fall into nine areas. The first three of these areas are geographically based.

1. Karapiro Dam to Te Puuaha o Waikato (the mouth of the Waikato River) referred to in map Area A (page 7).

Priorities for Trust funding for this area include projects that address:

- Improving connectivity between different parts of the ecosystem (both the Waipa and Waikato rivers, feeder streams and lowland lakes). Physical / chemical conditions are reliant on connectivity, and many native species require access to areas they cannot currently reach
- Management of drainage canals and other linkages between water bodies (for example at Lake Whangape and other similar lakes to improve habitat), including projects that involve planting native flora, and creating sinuosity in canals
- Habitat enhancement at high priority lakes
- Restoration of iinanga spawning sites, including artificial habitat in the short term until native vegetation re-establishes. Projects may also consider changing hydrology through removal of some tide gates to allow migration of iinanga
- Develop management action plans to restore key ecological values in significant riverine lakes, and wetlands
- Stream headwater re-vegetation projects including fencing, planting and improving connectivity with a view to improving the diversity of habitat
- Restoring and protecting the health and wellbeing of the Waikato River.

2. The Waipa River catchment referred to in map Area C and part of map Area A (page 7)

The primary environmental issues are sedimentation and microbe contamination. A 20 year Catchment Plan has been developed that maps out the most effective manner by which these issues can be addressed. Projects in this area will focus on those actions that support the implementation of this Catchment Plan.

Those applications that are based on the mauri of the Upper Waipa River should consider and document the extent to which the project will further the achievement of the Maniapoto Environmental Management Plan. Discussion of such projects with the Maniapoto Maori Trust Board is recommended.

Priority projects will include those that lead to outcomes such as:

- Riparian setbacks along the river and feeder streams, riparian planting and fencing
- Land retirement/afforestation of severely eroding land, including hill planting and forestry
- Biodiversity (protection/restoration of valuable habitats, including restoration of river network connectivity for biota to upstream habitats)
- Wetland protection and restoration, including reconnection and/or enhancement of off channel habitats
- Identification, prioritisation and stabilisation of erosion hotspots including river banks at a scale appropriate for reducing suspended sediment loads
- Assess and implement farm scale management methods to promote land use change in ash and mudstone catchments.

3. Above the Karapiro Dam to the Huka Falls referred to in map Area C and part of map Area A (page 7)

Priorities for Trust funding for this area include projects that address:

- Biodiversity improvement, including in-stream biota
- Larger riparian setbacks along the river and feeder streams, riparian planting and fencing
- Wetland restoration, protection and recreation, including headwater seeps and springs
- Protecting the diversity of natural landscapes such as unique geothermal landscapes
- Catchment management plans
- Protection and restoration of native fisheries and their habitats
- Reducing nutrient inputs into hydro lakes
- Improving access to the Waikato River.

4. Maatauranga Maaori

We support projects specifically identified as Maatauranga Maaori. However Maatauranga Maaori may be supported in any of the funding areas outlined and, where appropriate, this should be acknowledged.

Maatauranga Maaori is usually used to mean 'Maaori knowledge' – distinctive knowledge created by Maaori in history and arising from their living circumstances, their world view and their experiences.

The Trust encourages applications that recognise the important contribution of Maatauranga Maaori to the clean-up of the Waikato River and its catchment. Projects that work to reinvigorate the relationship of the Waikato River iwi and the Waikato River will be especially supported. Four key themes have been identified:

- i. The improvement of the health and well-being of the Waikato River through the practice and implementation of Kaitiakitanga by its iwi
- ii. The collection and dissemination of traditional knowledge relating to the Waikato River and its iwi
- iii. The development of tools and models that are based on Maatauranga Maaori which improve the health and well-being of the Waikato River
- iv. Restoration and enhancement of the mauri of the waterways in the Waikato River catchment.

5. Projects that have a community outcome associated with the Waikato River and its catchment

These may include (but are not limited to):

- Social science projects such as landowner education and awareness outreach programmes designed to change behaviours
- Community catchment care groups
- Support for and liaison between groups engaged in Clean-up Trust funded projects. The undertaking of educational and communication activities, that improve catchment understanding of the Vision and Strategy and how it's objectives can be achieved.

6. Projects that help the Trust to better ensure and monitor the efficiency and effectiveness of the use of Trust funding

These may include (but are not necessarily limited to):

- The development of catchment restoration plans
- The provision of best practice guidance to those undertaking restoration activities,
- The development of medium term (5-15 year) restoration plan for the Waikato River catchment
- Monitoring and reporting activities that demonstrate the effectiveness of work undertaken in achieving the objectives of the Vision and Strategy
- Frameworks that support the Trust at a macro-scale (e.g. over 30 years) to determine how best the Trust's objectives can be achieved.

- 7. Projects that improve water quality in streams, wetlands, lakes and drains that flow into the Waikato River and its catchment.**
 - The health and well being of the Waikato River is affected by the health of the water that flows into it. In order to improve and maintain water quality in the Waikato River it is important to manage the small streams, wetlands and drains that form the network of waterways that eventually flow into the river. Fencing and planting the banks of these waterways, particularly the small ones, will provide significant benefits
 - Projects that improve water quality in streams, wetlands, lakes and drains may include (but are not limited to):
 - Fencing stock from the banks and bed of waterways
 - Riparian planting.
- 8. Projects that protect and restore currently existing wetlands, and the creation of new wetlands throughout the catchment.**
 - Wetlands are part of the natural filtering system of the catchment. They provide habitat for many species of flora and fauna, and provide a range of biological services that improve water quality. Over the last 100 years the area of wetlands within the Waikato catchment has been significantly reduced. The protection and restoration of existing wetlands, and the creation of new wetlands, will add significantly to the achievement of the Trust's 10 year Goal and the objectives of the Vision and Strategy. The restoration of historic wetland will be prioritised over the creation of new wetlands
 - Projects that protect and restore wetlands may include (but are not be limited to):
 - Fencing stock from the banks and bed of wetlands
 - Riparian planting
 - Identification of existing wetlands and mechanisms for their ongoing protection.
- 9. High visibility projects**
 - Projects that occur in areas that are highly visible or accessible to the community will be prioritised over projects that offer equivalent outcomes but have less visibility or accessibility.
 - Projects that occur adjacent to the waterways of the catchment that are highly visible or accessible to the community will be given priority over similar projects having less visibility or accessibility.

4: Information requirements

4.1 Information requirements and priorities to guide applicants

All applications for funding must be completed using the application portal available on the Authority's website www.waikatoriver.org.nz. Applications must contain the following information:

Objectives of the proposed project

- What is the project, what are the benefits, when and where will it occur, and how long will it take?

Outcomes of the proposed project

- Identify the specific outcomes that the project will deliver.

Vision and Strategy

- Outline how the proposed project will contribute to the Objectives and Strategies in the Vision and Strategy of the Authority and Trust.

Fit with funding strategy

- Identify how the criteria and priorities for the Trust are met, as outlined in this Funding Strategy 2015. For any criteria that the application fails to meet, explain which criteria are not met, and why.

Scope

- Identify both what is in, and out, of scope.

Proposed approach

- Identify the proposed approach to successful implementation, including major workstreams and tasks, milestones and deliverables (with dates)
- Identify approach to monitoring and reporting, both during and after the project is completed.

Personnel

- Identify the proposed team and their respective roles, including any subcontractors. (where known).

Costs

- Provide a breakdown of the estimated costs (**in GST inclusive amounts**) of the proposed project, clearly linking costs to the various workstreams and milestones in the proposal. Identify any matching or supplemental funds that are to be provided by others.

Risks and mitigation

- Identify major risks and proposed mitigation measures that will ensure the project is successfully delivered to time, cost, and quality requirements as outlined in the proposal.

Previous experience

- Provide a synopsis of the organisation's relevant experience for the proposed project
- Provide a synopsis of the proposed applicant and project teams' relevant experience, including CVs where appropriate. This should include all sub contractors.

Referees

- Provide the contact details for two referees who will be able to comment on the quality of relevant work you have previously undertaken (both as an organisation and for individuals within the organisation).

This image shows a full page of blank, lined paper. It features approximately 20 evenly spaced horizontal blue lines across its entire width. The paper is otherwise completely empty, with no margins, text, or other markings.



